

**BULK LEVEL
MEASUREMENT**

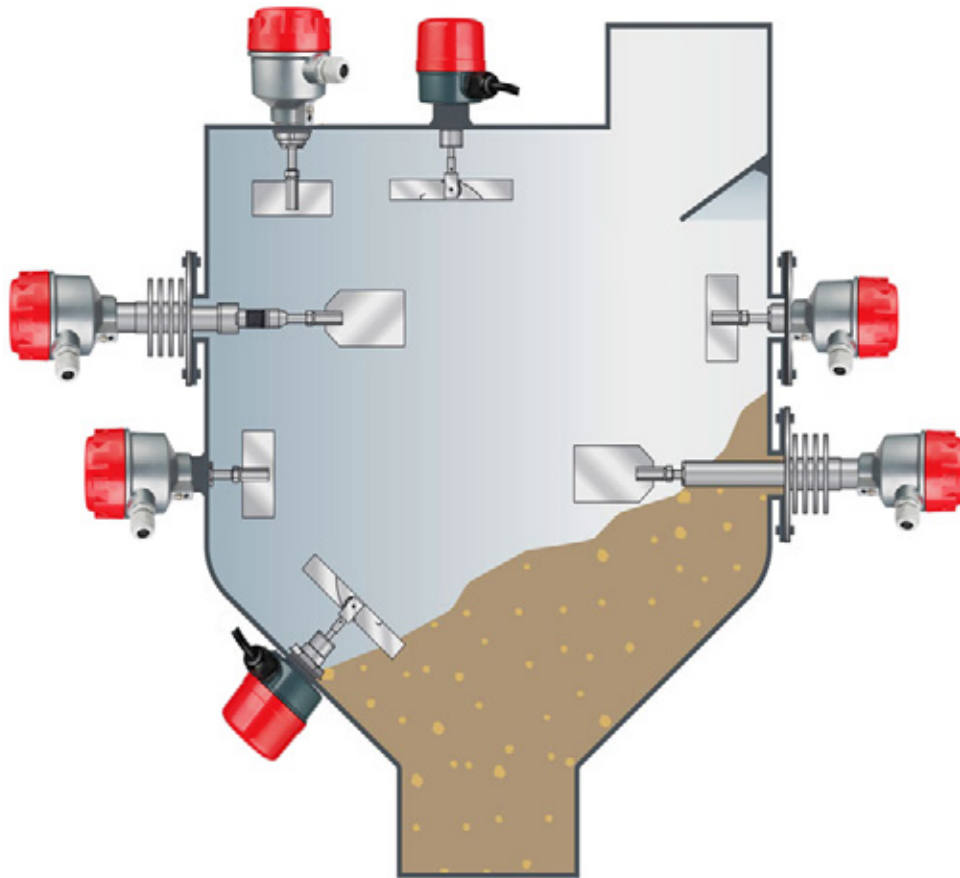


ROTARY PADDLE LEVEL SWITCH


POINT LEVEL MEASUREMENT SERIES

VANTSU

bluepoint[®]
TECHNOLOGIES



bluepoint[®]
TECHNOLOGIES

 (+54 11) 3163-8016

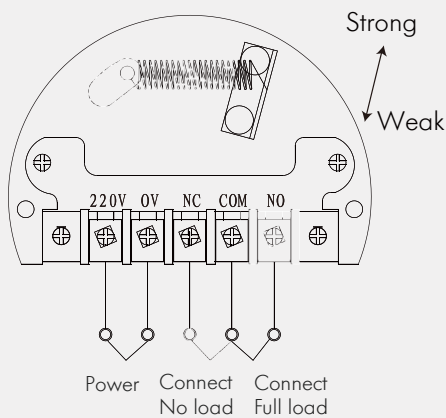
 info@bluepoint-technologies.ar

 www.bluepoint-technologies.ar

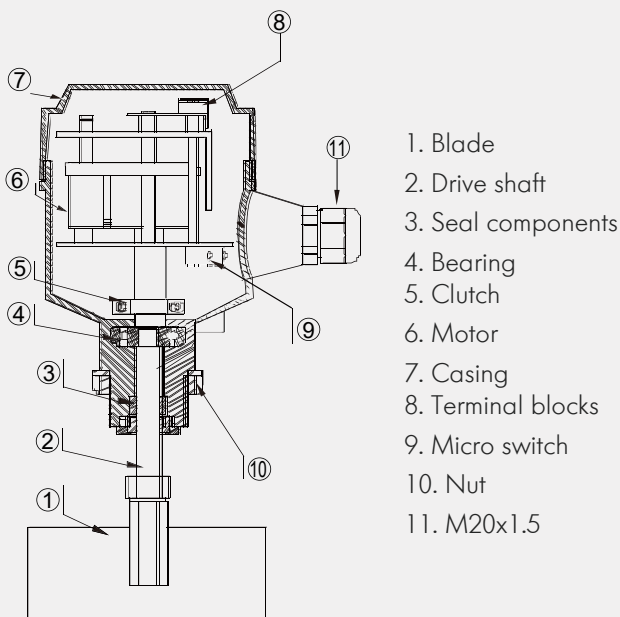
ROTARY PADDLE LEVEL SWITCH



SENSITIVITY ADJUSTMENT



STRUCTURE



Utilizes micro motor as drive device, transmission shaft contact with clutch. When it doesn't contact with material, the motor runs normally; when the blade contacts with material, the motor stops running; testing device outputs a contact signal and cuts the power and it stops rotary in the meantime. The pressure to blade is disappear when the material gradually fall down, and the testing device recovered to the original state by torsion spring. Torsion could be regulated according to different gravity of materials.

FEATURES

- Detection of loose solid materials using the technology of the rotating blade
- The highly integrated mechanical seal to prevent infiltration of dust along the axis
- The unique elastically clutch structure, when the blade being overloaded, the automatic protection of electrical machinery could be realized
- Completely mechanical and electrical separation structure, need not to demolish, easy to maintain
- Special blades can be used for low-density mediums
- Use of the process connecting pieces, easy to install

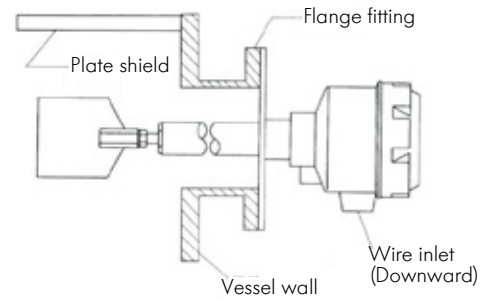
APPLICATIONS

Used for detecting material level of warehouse, vessel, bin and tank. The material level switch can prevent warehouse flooding, tank jam and ware house empty so as to reduce flooding, material waste and standby time.

It is also suitable for plastic, food, chemical industry, mineral iron, material and other solid matter.

MOUNTING

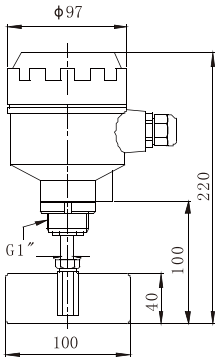
- The wire inlet of the junction box should be downward, lock the screw nut well.
- The power supply should be consistent with the power indicated on the Rotary Paddle Level Switch.
- The load in the line should be conformed to the contact capacity of the switch.
- The switch should not be installed under the solid feed inlet for reducing the impaction to the vane and fault action; if cannot avoid, please fix a protective shield on the vane as the following drawing. The minimum distance of protective shield no less 150mm.



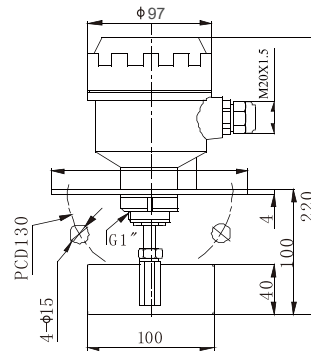
TECHNICAL DATA

Item	Basic parameters
Supply voltage	220 V AC / 110 V AC / 24 V AC / 24 V DC
Contact capacity	250VAC/5A, SDPT
Operating temperature	-30...+80 °C (min. -40 and max.up to +80°C is customization)
Power consumption	≤ 3 W
Rotary torque	1 N.m
Rotary speed	1 prm (selectable 5 prm is available)
Blade material	SUS304
Suitable gravity	≥ 0.4g/cm ³
Electrical connection	M20×1.5
Housing material	Aluminum
Ingress protection	IP65

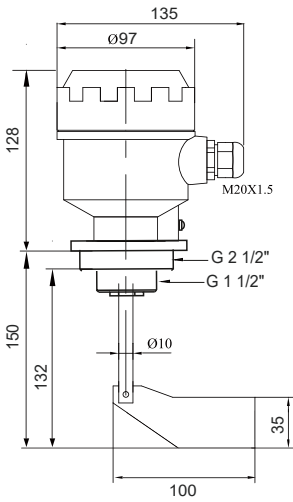




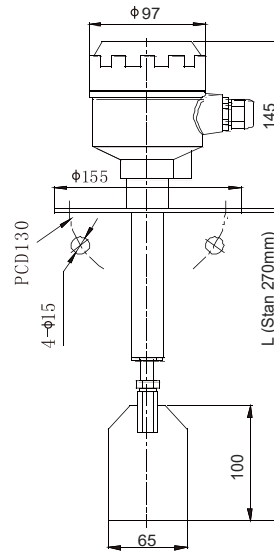
STANDARD THREAD VERSION
VRS-10S



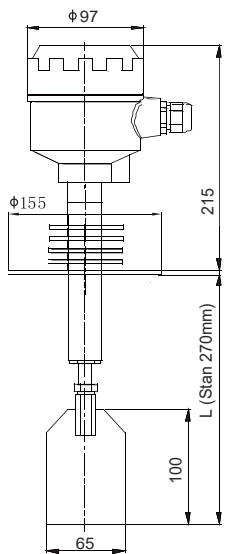
STANDARD FLANGE VERSION
VRS-10F



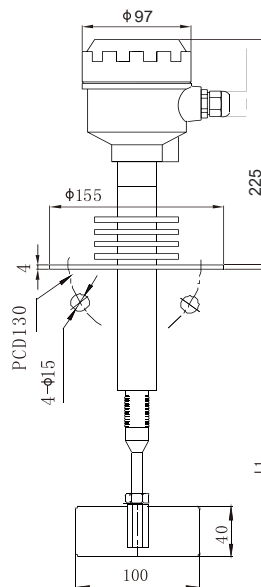
CUSTOMIZED THREAD VERSION
VRS-10XLT



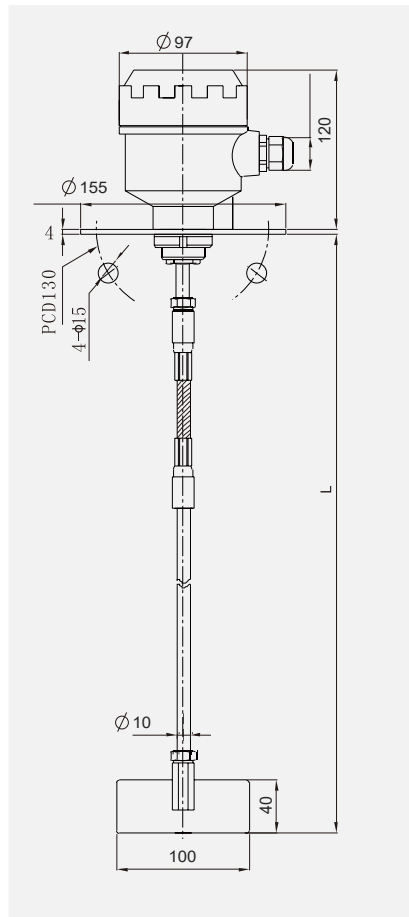
FLANGE WITH PROTECTION ROD
VRS-20F



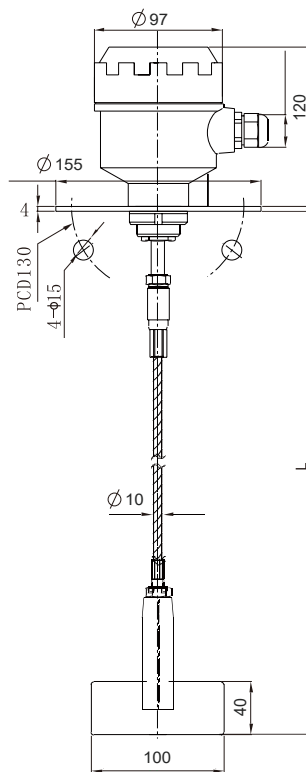
HIGH TEMP WITH PROTECTION ROD
VRS-20FT



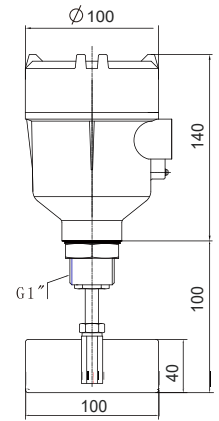
SPECIAL HIGH TEMPERATURE VERSION
VRS-20FH (max 800°C)



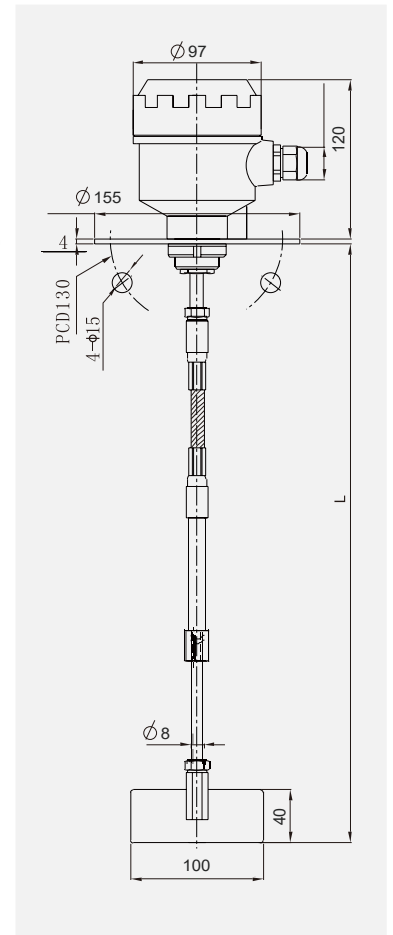
EXTENSION ROD VERSION
VRS-10FL



FLEXIBLE ROPE VERSION
VRS-40F



EXPLOSION-PROOF VERSION
VRS-EX10



ADJUSTABLE SHAFT LENGTH VERSION
VRS-30F

NAMING RULES



1 Product code

VRS - Standard type, rotary speed 1rpm
 VRS5 - Rotary speed is 5 rpm

2 Version code

10 - Standard type
 20 - Protection rod type
 30 - Adjustable shaft length type
 40 - Flexible steel rope type
 EX - Explosion-proof type
 X - Customized

3 Process fitting

SG - G Thread+size, for example: SG1: G1"
 SB - BSPT Thread+size
 SN - NPT Thread+size
 F - Flange (JIS 2-1/2"x5kg/cm²)
 O - Others

4 Supply voltage

1 - 220 V AC
 2 - 110 V AC
 3 - 24 V AC
 4 - 24 V DC

5 Blade code

A - 100x40 (WxH)
 B - 65x100 (WxH)
 C - 200x28 (WxH)
 D - 100x130, Sickle type
 E - 100x35 (WxH)
 S - Customized

6 Insertion length, L

Blank: standard
 L500 - insert length is 500mm
 L750 - insert length is 750mm

7 Process temperature

Blank - standard, -30...+80°C
 T - Standard high temperature type, max. to +200°C
 H - Ultra high temperature type, max. to +800°C

8 Others

Blank - standard
 N - Noting request in the text of the order

ROTARY PADDLE LEVEL MEASUREMENT

PADDLE SELECTION GUIDE

